



APPENDIX 14-1

PHOTOGRAPHIC RECORD



Plate 14-1: CH13, a possible enclosure/hut, facing north.



Plate 14-2: CH13, a possible enclosure/hut, facing south.



Plate 14-3: CO106-010, a four-poster arrangement of standing stones, looking towards T12 to the west.



Plate 14-4: Lazy beds, looking towards T14 to the northeast.



Plate 14-5: Vernacular building CH09, facing northeast.



Plate 14-6: Stone wall associated with CH07, facing east.



Plate 14-7: Stone wall running north-south to the north of CH08, facing north.



Plate 14-8: Enclosure CO092-086 at eastern end of gully, facing south.



Plate 14-9: Standing stone (CO092-048) looking towards T06 to northeast.



Plate 14-10: Stone wall forming the Ballynamought and Coomclogh townland boundary (CO092-089 and CO092-094), only occasionally visible through vegetation, facing south.



Plate 14-11: Drystone field boundary (CO092-090 and CO092-095), facing west towards T03.



Plate 14-12: Hut site (CO092-061002) and enclosure (CO092-061001), facing west towards T02.



Plate 14-13: East façade of Carrigacorra Bridge (CH15), facing southwest.



Plate 14-14: Original bridge (CH15) with adjoining modern concrete structure, facing east.



Plate 14-15: Upstanding boundary wall of Ballyhalwick House (CH20), facing south.



Plate 14-16: Upstanding gated entrance to Ballyhalwick House (CH20), facing northeast.

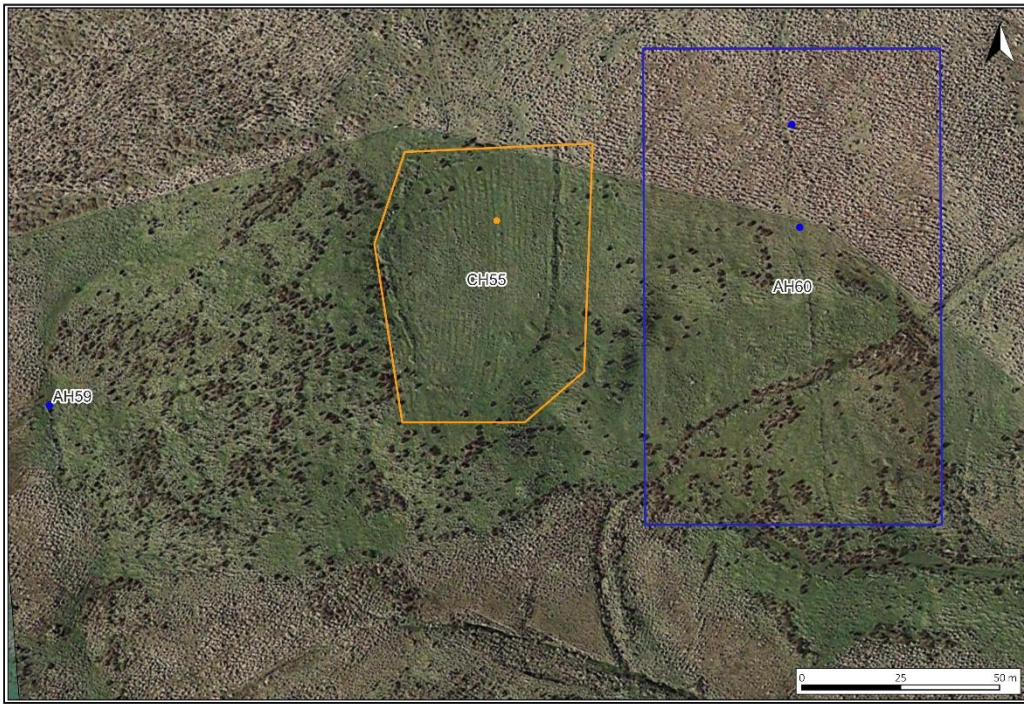


Plate 14-17: Aerial imagery (Google Earth 2013) of CH55, AH59 and AH60.

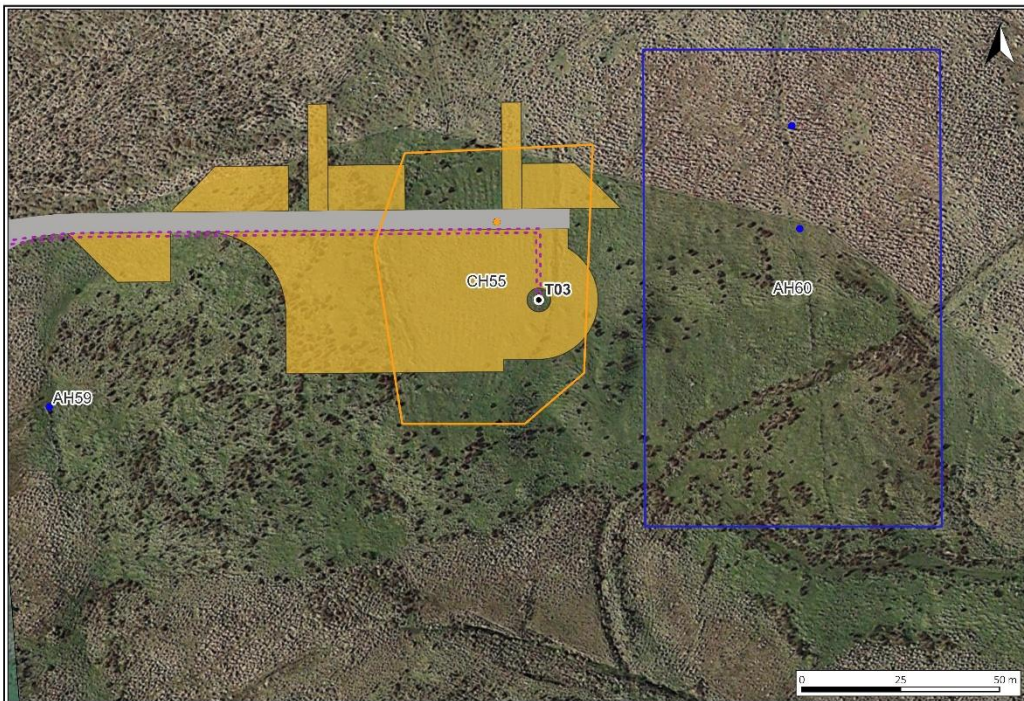


Plate 14-18: Aerial imagery (Google Earth 2013) of CH55, AH59 and AH60, showing proposed T03 and associated infrastructure.